

# Model JYB-CP

## Industrial Pressure Transmitter with Display



### DESCRIPTION

Model JYB-CP is an efficient general purpose gage-only pressure transmitter with 128x64 LCD display and wireless communication. Each unit is constructed of stainless steel for durability in dry rugged environments. Both gas and liquid pressure overloads of up to 50% over capacity are safely accepted. The transmitter uses our proprietary current output with wide temperature compensation. This design references the primary pressure sensing diaphragm to the atmosphere, and provides a stable zero regardless of the transducer environment.

### PRESSURE MEASUREMENT

Supply Voltage	12 to 30VDC, Four 5# Battery Two Lithium Battery (8AH/3.6v)
Operating Range	Any zero based full scale from 2psi(10kPa) to 5000psi (350bar)
Over Pressure	Two times for the full scale
Output Signal	Current two-wire 4mA to 20mA ( Load < 300Ω); Wireless (428 ~ 435.5MHz) about 200m
Pressure Media	Fluids compatible with 316 stainless steel and Hastelloy C276 (NACE compatible grades)

### PERFORMANCE SPECIFICATIONS

Accuracy	±0.25%, ±0.5% (25℃)
Response	<100ms
Long Term Stability	<0.1% FS per year
Temperature Range	-20 to 85℃
Temperature Effects	Max 1.0% FS typical over 0 to 60℃ Max 1.5% FS typical over -20 to 85℃

### PHYSICAL CONNECTION

Pressure Connection	G1/4 male with screw-in adaptor or M20x1.5 male screw-in adaptor
Electrical Connection	Connect terminal (IP65)

### FEATURES

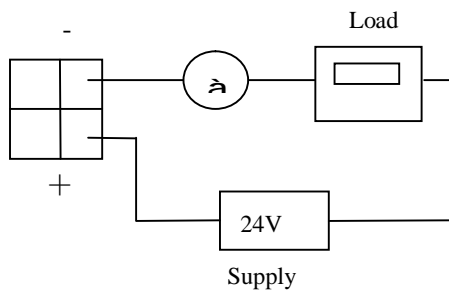
- 0.015 %FS /°F temperature effect
- 0.25 %, 0.5 % accuracy
- 2 psi to 5000 psi range
- True gage or absolute
- 128x64 LCD display
- CE Certification

### ORDERING CODES

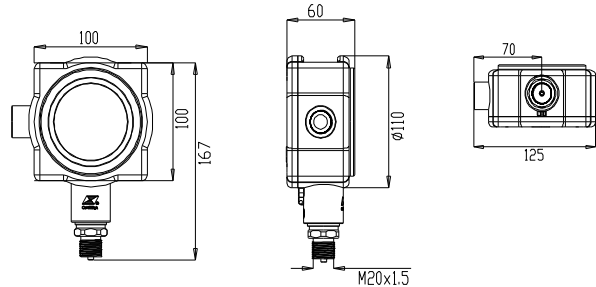
JYB-CP		
I1	Current two-wire 4 mA to 20 mA	
B1	Four 5# Battery-powered without output	
W1	Two Lithium Battery-powered with wireless (428 ~ 435.5MHz)	
M6	Display with LCD	
N1	M20x1.5 male screw-in adaptor	
N2	G1/4 male with screw-in adaptor	
N3	Flange (DN25)	
S1	0-2psi	
S2	0-5psi	
S3	0-10psi	
S4	0-20psi	
S5	0-50psi	
S6	0-100psi	
S7	0-200psi	
S8	0-500psi	
S9	0-1000psi	
S10	0-2000psi	
S11	0-5000psi	
B1	Gauge	
B2	Absolute	
A1	±0.25%	
A2	±0.5%	

### ELECTRICAL CONNECTION

- Current two-wire 4ma to 20mA



### MOUNTING DIMENSION



*If you need else dimensions , please explain specification.*

### NOTES

- 1• Because the sensor belongs to the precision component, in order to prevent damages of the product, don't disassemble voluntarily and touch a film slice, please.
- 2• When make a survey of high-pressure, must install buffer equipment in the exit of the connection between the sensor and the medium, which can avoid the momentary pulse high-pressure and the damages of sensors.
- 3• Accuracies stated are expected for best fit straight line for all errors including linearity, hysteresis & non-repeatability thru zero.
- 4• When install the pressure transmitter, must use the spanner from the bottom of the nut to screw tightly, avoid directly turning on the upside.